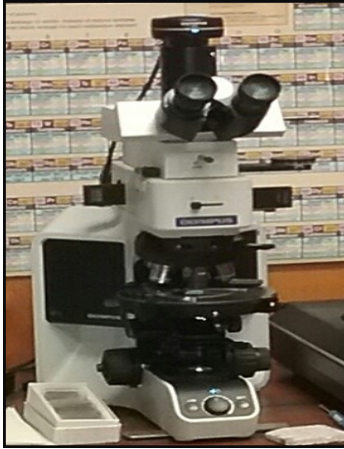




WBE certified company

Petrography Services

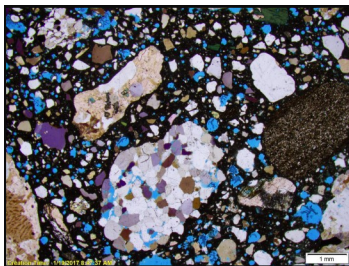


ATL offers full petrographic analysis of concrete per ASTM C856 to determine the cause(s) behind concrete weakness or failure and/or to verify paste content and composition, water/cement ratio, and mineralogy and physical parameters of constituent aggregates.

ATL also offers analysis of air void systems within concrete per ASTM C457. This service provides information ranging from verifying sample compliance with project specifications to susceptibility to freeze-thaw damage.

Concrete and Aggregate Examinations

- ◆ **ASTM C295** - Standard Guide for Petrographic Examination of Aggregates for Concrete
- ◆ **ASTM C457** - Standard Test Method for Microscopical Determination of Parameters of the Air-Void System in Hardened Concrete
- ◆ **ASTM C856** - Standard Practice for Petrographic Examination of Hardened Concrete



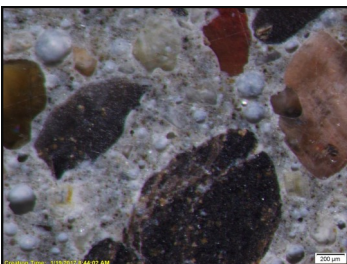
Laboratory Examinations

- ◆ **Microscopic and geochemical analysis:** Concrete, rocks, minerals
- ◆ **XRD and SEM**
- ◆ **Assay and trace element characterization**



Why Petrography from ATL?

Christopher R. Kelson, Ph.D, P.G. is Senior Geologist for Atlantic Testing Laboratories. He specializes in geochemistry, petrography, petrology, economic geology, environmental geology, and mineralogy and has 20+ years of both field- and laboratory-based experience within the mining industry, and 15+ years of university instruction and research experience.



**To request a quote or
for more information:**

Email: CKelson@AtlanticTesting.com
Web: AtlanticTesting.com

Think Quality

Ten Strategic Locations Throughout New York State

**Albany
Poughkeepsie**

**Binghamton
Rochester**

**Canton
Syracuse**

**Elmira
Utica**

**Plattsburgh
Watertown**